

# ENGINEERED STANDARD SYSTEMS

## DYNASEAL

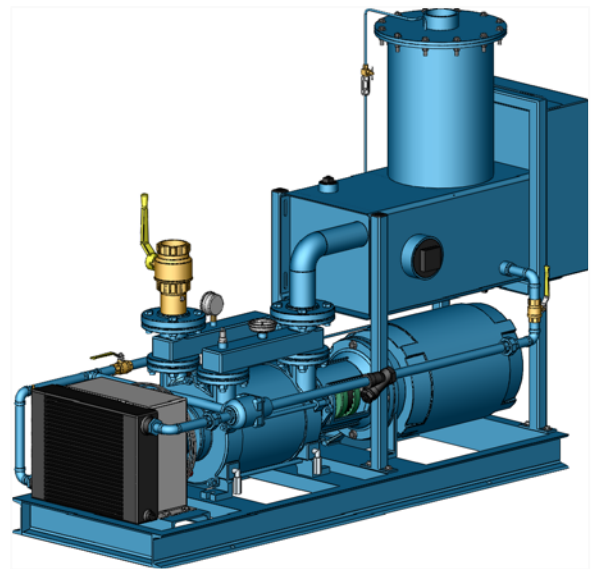
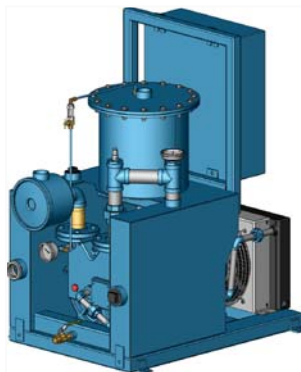
System Model	Nominal Data		Maximum	Pump Model	Weight
	60 Hertz		Vacuum	Standard Material	Approx.
	ACFM	Motor HP	mmHg A		Kg
TRD 30M-SAC	35	3	25	TRMB 32-50	173
TRD 50M-SAC	55	5	25	TRMB 32-75	188
TRD 70M-SAC	70	5	25	TRMB 40-110	218
TRD 070S-SAC	75	5	100	TRSE 40-100/C	230
TRD 070H-SAC	75	5	15	TRHE 40-110/C	240
TRD 100M-SAC	105	7.5	25	TRMB 40-150	250
TRD 100S-SAC	108	7.5	100	TRSE 40-150/C	265
TRD 100H-SAC	100	7.5	15	TRHE 40-140/C	395
TRD 150M-SAC	148	10	25	TRMB 40-200	275
TRD 150V-SAC	150	10	15	TRVA 50-220/C	385
TRD 200V-SAC	205	15	15	TRVA 65-300/C	625
TRD 250H-SAC	250	20	15	TRHB 50-340/C	680
TRD 300V-SAC	300	20	15	TRVA 65-450/1C	650
TRD 400S-SAC	385	25	75	TRSC 100-550/C	790
TRD 400V-SAC	400	30	15	TRVX 1003/1C	810
TRD 400H-SAC	410	40	15	TRHC 80-600/C	1,000
TRD 500S-SAC	500	40	75	TRSC 100-700/C	980
TRD 500V-SAC	500	40	15	TRVX 1005/1C	980
TRD 500H-SAC	530	50	15	TRHC 80-750/C	1,150
TRD 600V-SAC	590	40	15	TRVX 1007/1C	1,000
TRD 650S-SAC	650	50	100	TRSB 100-980/C	1,250
TRD 700S-SAC	750	50	100	TRSE 125-1250/C	1,650
TRD 700H-SAC	700	50	15	TRHE 100-1260/C	1,600
TRD 1000S-SAC	910	60	100	TRSE 125-1550/C	1,600
TRD 1000H-SAC	950	60	15	TRHE 100-1600/C	1,850
TRD 1100S-SAC	1050	75	100	TRSE 125-1550/C	1,950
TRD 1200H-SAC	1200	100	15	TRHA 150-2000/C	3,000
TRD 1800H-SAC	1800	150	15	TRHA 150-3100/C	4,000

### Optional Accessories

Low Liquid Level - Mounted  
 High Liquid Level - Mounted  
 High Back Pressure Switch - Mounted  
 HOA with Vacuum Switch Control  
 Vibration Mount, Set of 4 - Supplied

**LARGER MODELS ARE AVAILABLE UPON REQUEST**

**SAC = SIMPLEX AIR COOLED**  
**SWC = SIMPLEX WATER COOLED**



**Premier Fluid Systems**  
 Canadian Home of Travaini Pumps

4460 Harvester Road • Burlington • Ontario • L7L 4X2 • Website: [www.pfspumps.com](http://www.pfspumps.com)  
 Tel: 1-800-461-2611 or 905-637-2611 • Fax: 905-333-4722 • e-mail: [info@pfspumps.com](mailto:info@pfspumps.com)

**DATE : SEPT 2015**

**N°.: 3.2**